

number is corresponding to a name or corresponding to a action. If the ID number is for the name, then it enters to the the program of movement to and from . If the ID number is for the action, the voice informs action to be perform, and performs the action. The main program of voice recognition, is divided into four parts: initialization part, the training component, identification of parts, re-training part.

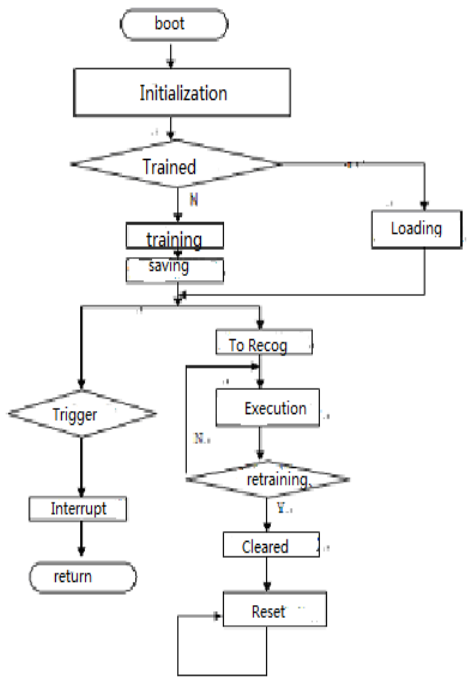


Fig.7 Main program flow chart.

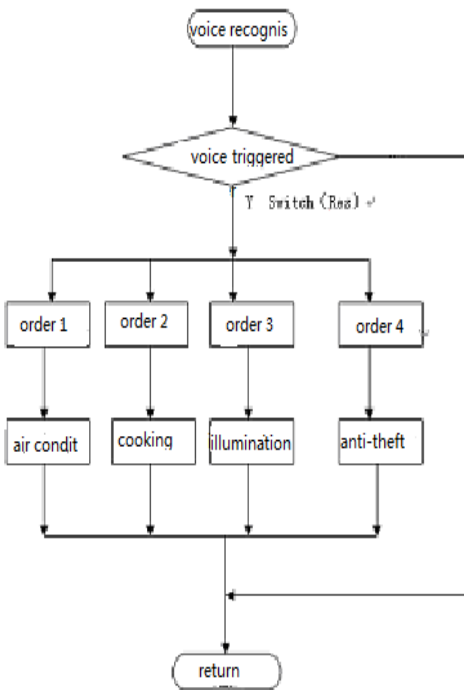


Fig.8 Speech recognition program flow chart

C . The voice playback program flow chart

The initialization mode of the voice player is SACM_S480 mode. SPCE061A is a voice product, Sunplus company provides a variety of audio codec algorithm and its API library, the SACM-LIB (file name SACMV26e.lib 26e is the version number). The library is made of A/D module, encoding module , decoding module, storage module , and D/A module, Each module has its own application program interface namely API, The users only need to understand the function and its parameters to each module. The flow chart of the voice player is shown in fig.9.

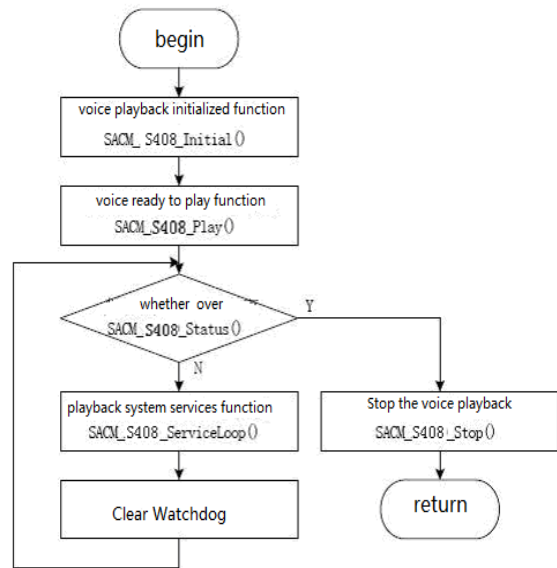


Fig.9 The voice player's flowchart

V . Acknowledgment

The system uses speech recognition technology and GSM communication network to control the state of the electrical equipment of indoor multi-channel. It also has real-time safety monitoring function and remote alarm function. If dangerous occurs, it can call by dialing. The instrument has a multi-function, versatility features.

References

- [1] Xu Aijun, *The Intelligent Measurement and Control Principle and Design of Instrument* . Beijing: Beihang University press, 1995
- [2] Chang Xudong, Hong Li, Wang Zhifu. Remote Alarm and Control System Based on the GSM Short Message. *Jiangxi science*, 2006,4:191~2009.
- [3] Guo Zhiyuan.,Remote Alarm and Control System Based on AT89S52 , *Machinery Research and Application*, 2007,10:106~108.